

Rexroth Frequency Converter Application Specific Firmware

Operating Instructions

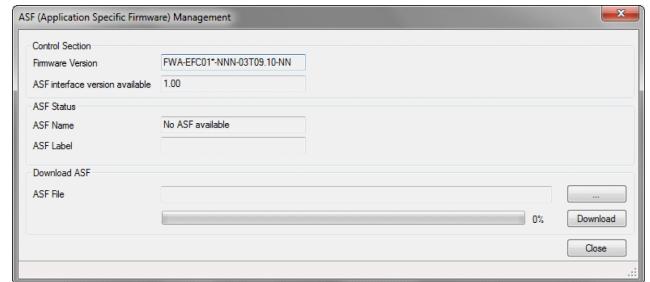
R912006879
Edition 01

Introduction

For the use of Application Specific Firmware (ASF) of Rexroth frequency converter, the users need to use ConverterWorks to download and certify the ASF files.



- ▶ Ensure that the version of ConverterWorks applied is 01V06 and above. Users can download the latest version from www.boschrexroth.com/efcx610 or contact technical service engineer.
- ▶ Ensure that the version of frequency converter's firmware applied is 03V08 and above. Users can use parameter d0.99 to check the version of the firmware. If the latest available version is not found, contact technical service engineer for support.
- ▶ The firmware package contains ".ibf" and ".par" files. Users can download the latest firmware package from www.boschrexroth.com/efcx610 or contact technical service engineer.

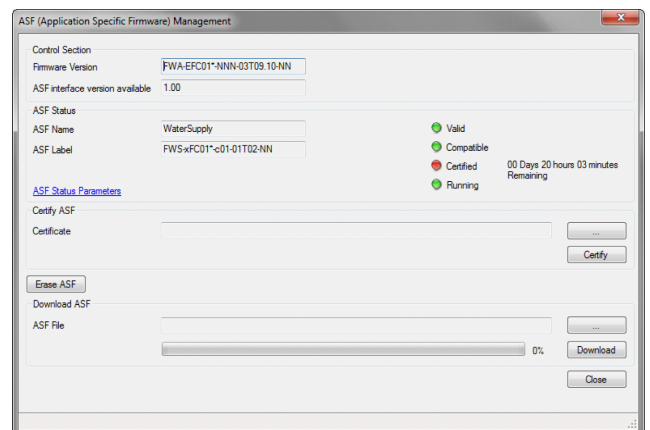


ASF Management window 1




If the ASF file has been downloaded before, **"ASF Management window 2"** will display instead.

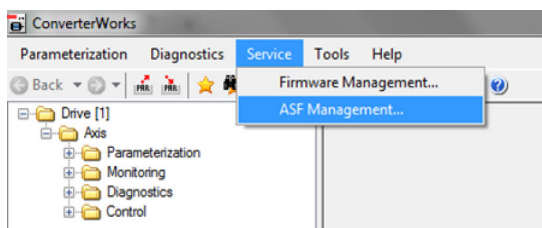
5. Choose ".ibf" file in **"Download ASF"** area, then click **"Download"**.
6. After download is completed, the display window will show as follows.



ASF Management window 2

Configuration Steps

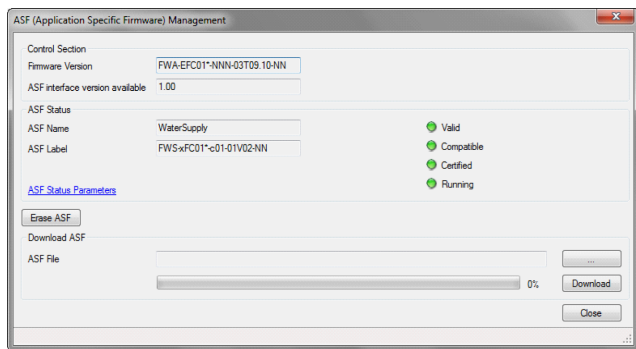
1. Connect frequency converter and PC with USB cable.
2. Open ConverterWorks, click **"Disconnect / Switch Offline"** button  in the shortcut menu.
3. Select **"Service -> ASF Management"** in the main menu.



ASF Management menu

4. The **"ASF Management"** window will display as below.

7. Choose ".par" file in **"Certify ASF"** area, then click **"Certify"**.
8. When the indicator light on the Certified item changes from red to green, it means that the certification is successful.



ASF certified successful

9. Once the configuration is finished, users can start running the firmware in normal state.



Click **"Erase ASF"** in **"ASF Management"** window to delete ".ibf" and ".par" files from the frequency converter.



Copyright

© Bosch Rexroth (Xi'an) Electric Drives and Controls Co., Ltd. 2016
This document, as well as the data, specifications and other information set forth in it, are the exclusive property of Bosch Rexroth (Xi'an) Electric Drives and Controls Co., Ltd. It may not be reproduced or given to third parties without its consent.